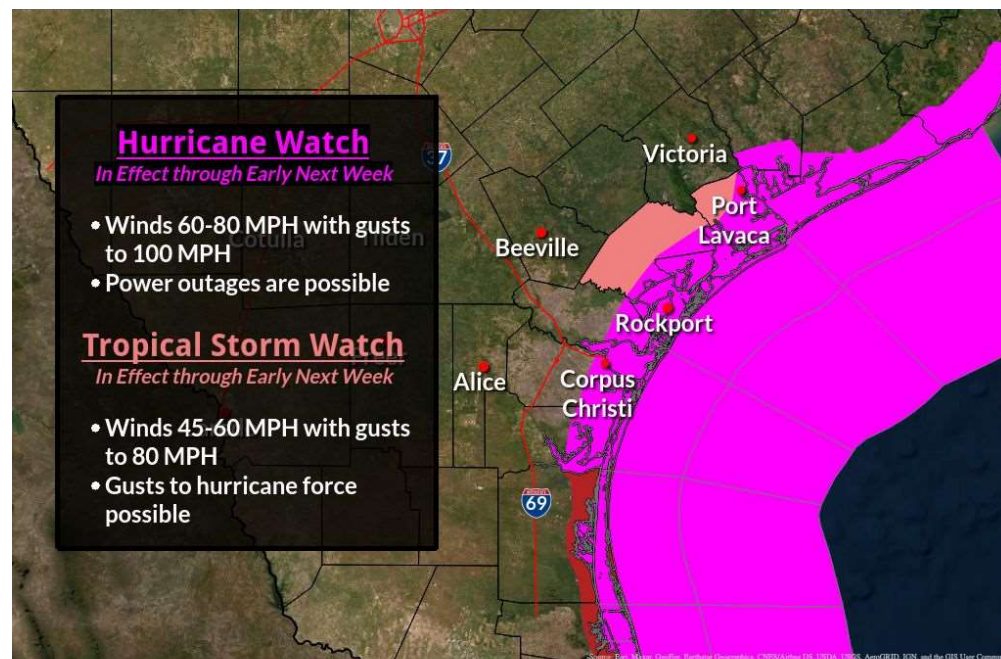




Tropical Storm Beryl Briefing

NEW Key Points

- Preparing for a hurricane to make landfall along the Coastal Bend. Guidance is narrowing to between Corpus Christi and Matagorda Bay for a landfall location as a strong Category 1 Hurricane, though plan for a Category 2.
- Tropical Storm Warning south of Baffin Bay. Hurricane and Storm Surge Watches remain in effect. Tropical Storm Watch added to inland Refugio and Calhoun Counties.
- 3 to 5 foot storm surge possible.
- 5-10 inches of rain, isolated amounts to 15 inches.
- Earliest reasonable time of arrival of TS force winds is Sunday afternoon. Most likely time is Sunday night.



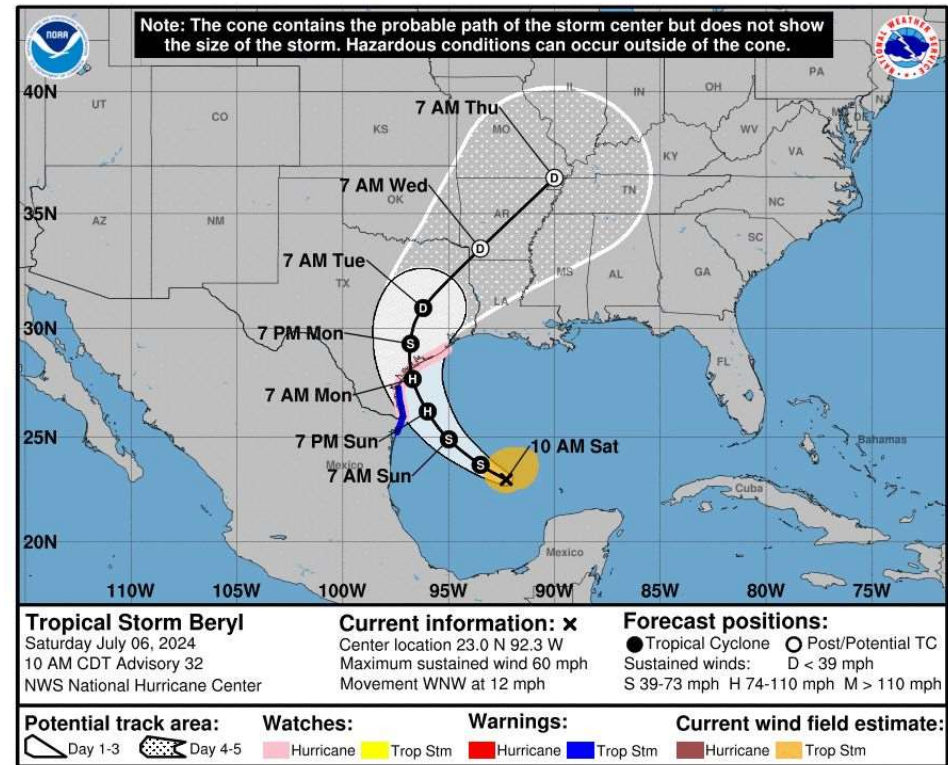


Tropical Storm Beryl Briefing

NEW Key Points Continued

- Dangerous rip currents/tidal runoff along the coast will continue through the Holiday Weekend. Storm Surge and high seas will rapidly increase Sunday, reaching their peak Sunday night through Monday.
 - ◆ Dangerous swimming conditions throughout the Holiday weekend!

- Potential for heavy rain with flash and river flooding possible, especially Sunday night and Monday. Along and right of the center has the best chance for the heaviest rainfall.
 - ◆ Threat for scattered tornadoes exists as well.





Situation Overview

Tropical Storm Beryl



- Located over the Southwest Gulf of Mexico and moving WNW at 12 mph.
- Currently a Tropical Storm with 60 mph sustained winds.
- Tropical Storm Force Winds extend 125 miles from the center.

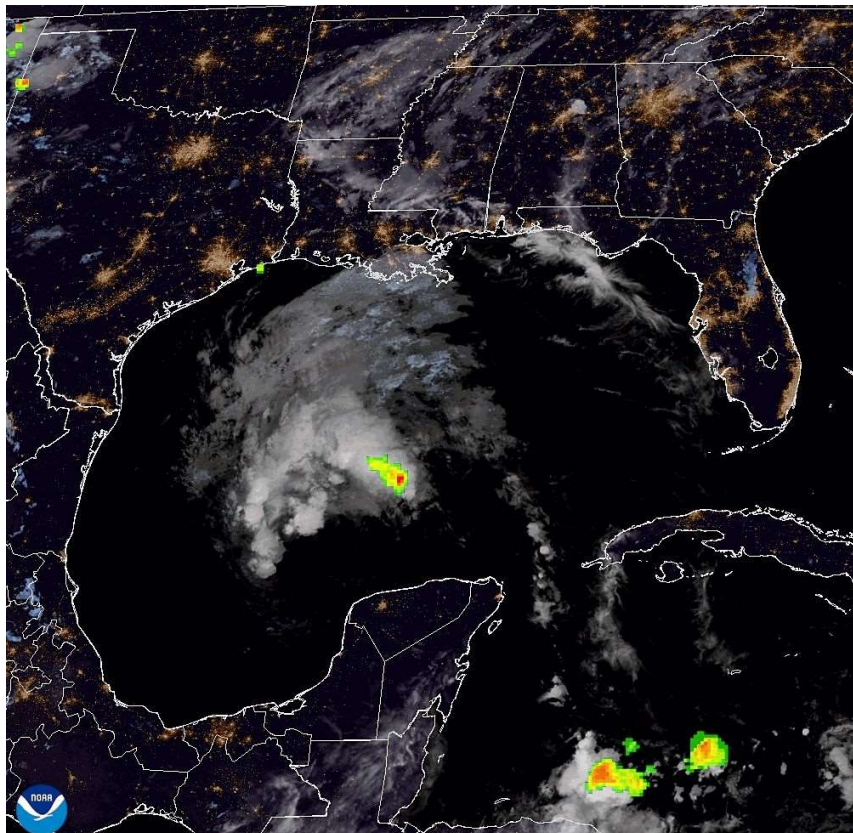




Current Satellite View

July 6, 2024
11:00 AM

Tropical Storm Beryl



06 Jul 2024 10:11 NOAA/NESDIS/STAR GOES-East GLM FED over ABI 10:06 Geocolor

Beryl is located in the SW Gulf and trying to reorganize as it moves back into warmer waters.

It is expected to strengthen into at least a Category 1 hurricane before making landfall in Texas.



National Oceanic and
Atmospheric Administration
U.S. Department of Commerce

National Weather Service
Corpus Christi, TX



Risk Outlook for South Texas

July 6, 2024
11:00 AM

Tropical Storm Beryl

	Saturday, Jul 6	Sunday, Jul 7	Monday, Jul 8	Tuesday, Jul 9	Wednesday, Jul 10
Coastal Plains		Periods of Heavy Rain & Strong Winds Sunday Night Flash Flooding Poss.	Tropical Storm Conditions Flash & River Flooding Isolated Tornadoes	Isolated Storms River Flooding Poss.	
Coastal Bend		Periods of Heavy Rain & TS Force Winds Poss. Sunday Night Flash Flooding Poss.	Hurricane Conditions Flash & River Flooding Isolated Tornadoes	Isolated Storms River Flooding Poss.	
Victoria Crossroads		Periods of Heavy Rain & TS Force Winds Poss. Sunday Night Flash Flooding Poss.	Tropical Storm to Near Hurricane Conditions Flash & River Flooding Scattered Tornadoes	Isolated Storms River Flooding Poss.	
Brush Country		Some rain may move in to eastern areas late Sunday Night with Heavy Rain	Periods of Heavy Rain & Gusty Winds Poss.		
Marine	Increased Swells Rip Currents	15-20 Foot Seas Rip Currents	24-29 Foot Seas Rip Currents	Seas Decreasing to < 6 Feet Rip Currents	

Risk Levels

Little to None

Minor

Moderate

Major

Extreme



National Oceanic and Atmospheric Administration
U.S. Department of Commerce

National Weather Service
Corpus Christi, TX

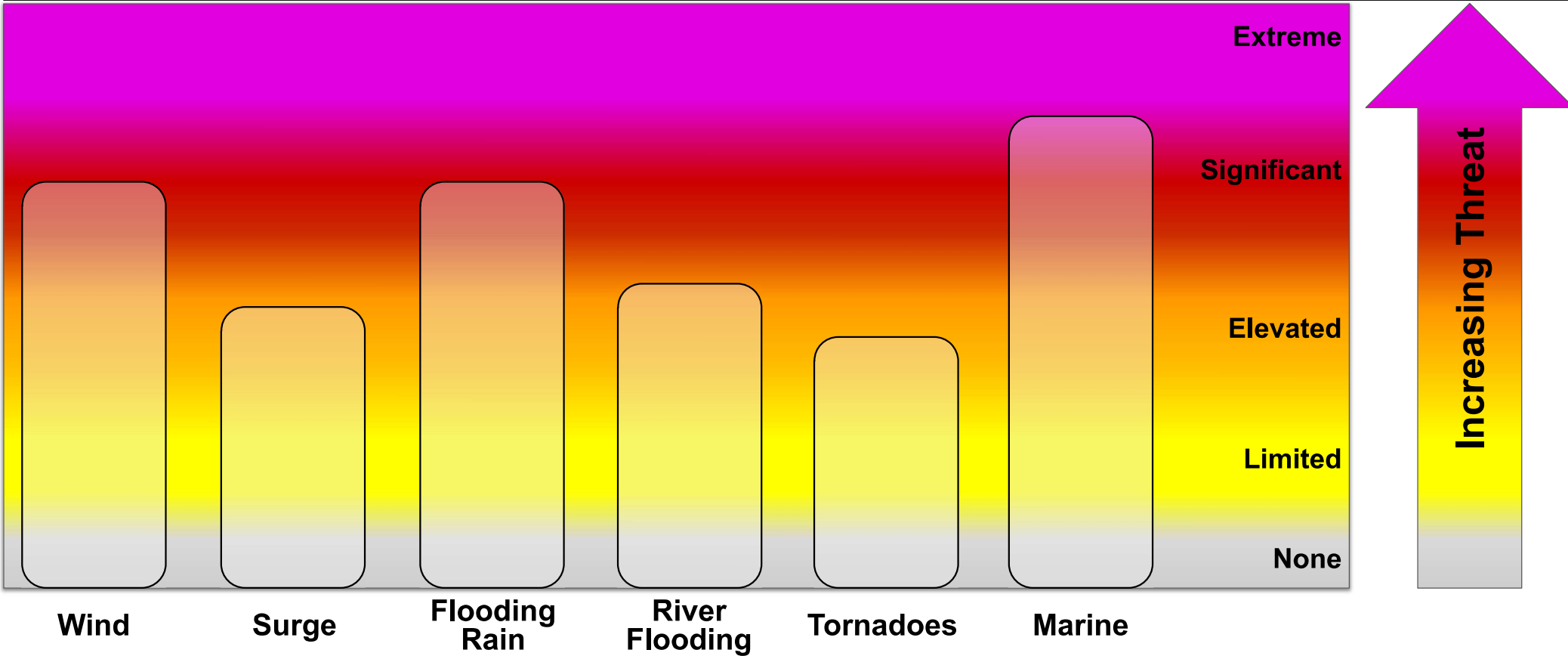


Threat Levels

Tropical Storm Beryl

July 6, 2024
11:00 AM

For information on specific hazards in this area, please go to: <https://www.weather.gov/srh/tropical?office=crp>



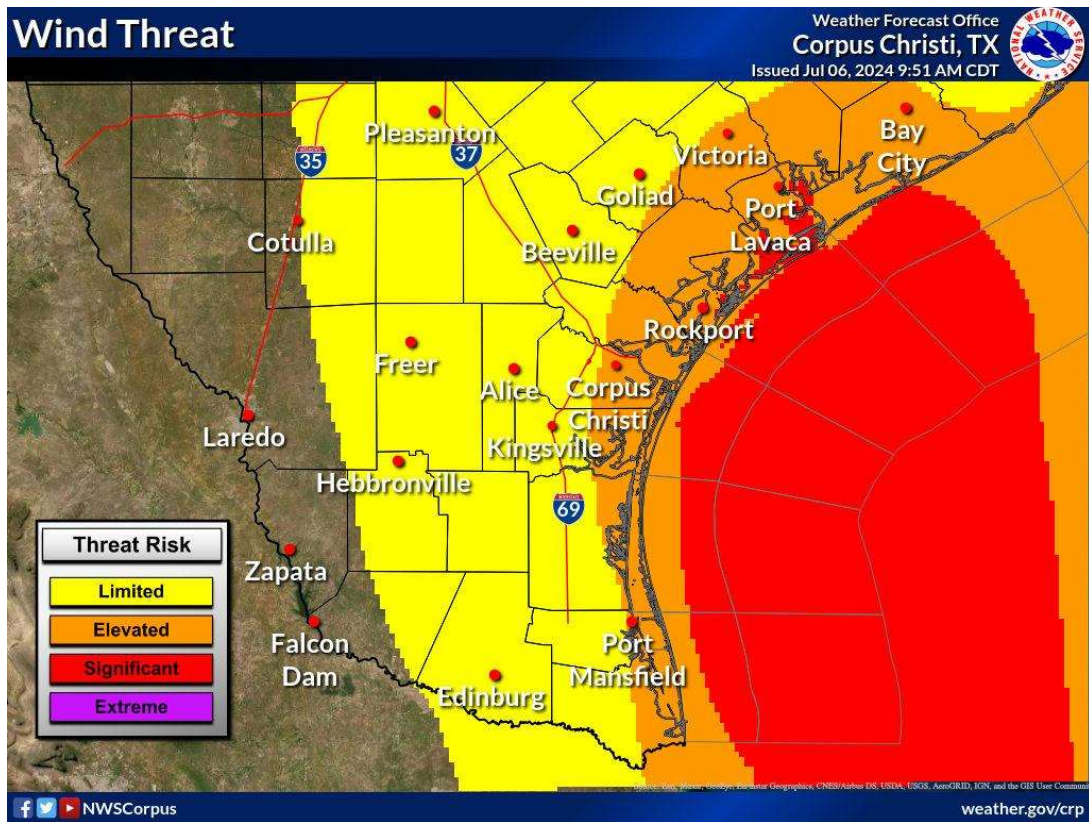


Wind Threat - Significant

June 18, 2024
10:11 AM

Tropical Storm Beryl

Be Safe And Prepare For These Potential Conditions



- Considerable roof and some structural damage to sturdy buildings.
- Mobile homes severely damaged, some destroyed



- Many large trees snapped / uprooted.
- Debris makes some roads impassable.
- Several bridges, causeways, and access routes impassable.

Large areas with power and communications outages.



National Oceanic and Atmospheric Administration
U.S. Department of Commerce

National Weather Service
Corpus Christi, TX

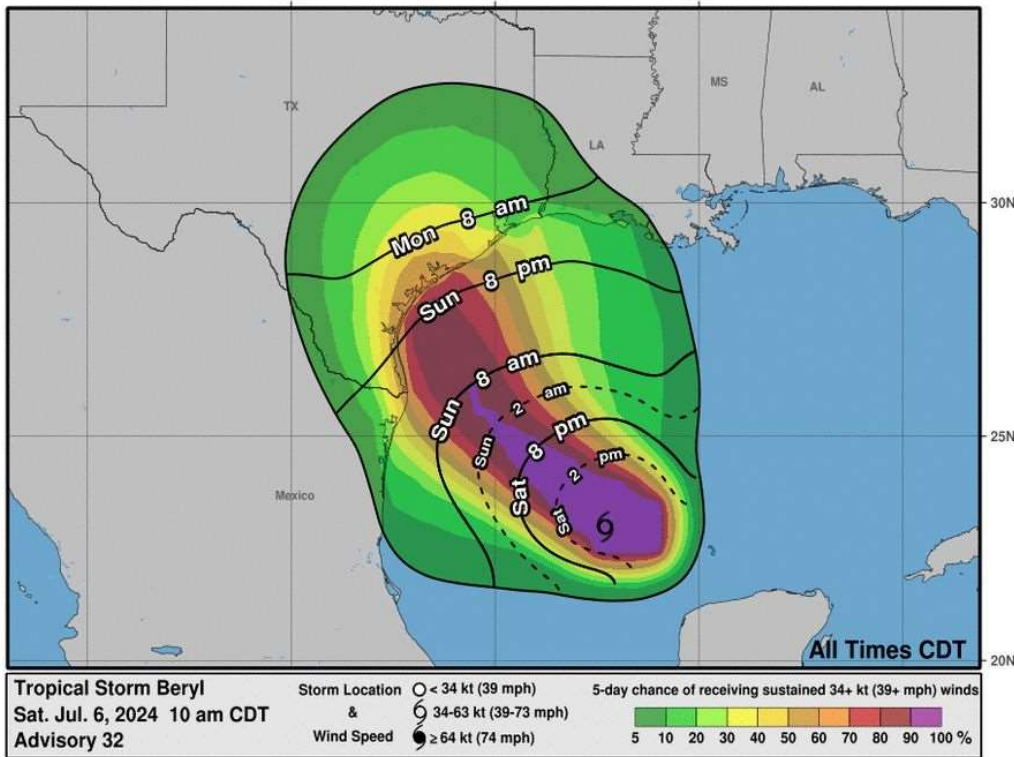


Most Likely Time of Arrival of TS Force Winds

July 6, 2024
11:00 AM

Tropical Storm Beryl

Most Likely Arrival Time of Tropical-Storm-Force Winds



- The most likely time of arrival of Tropical Storm Force Winds for the South Texas Coast is Sunday night.
- However, this area could see Tropical Storm Force Winds as early as Sunday afternoon.

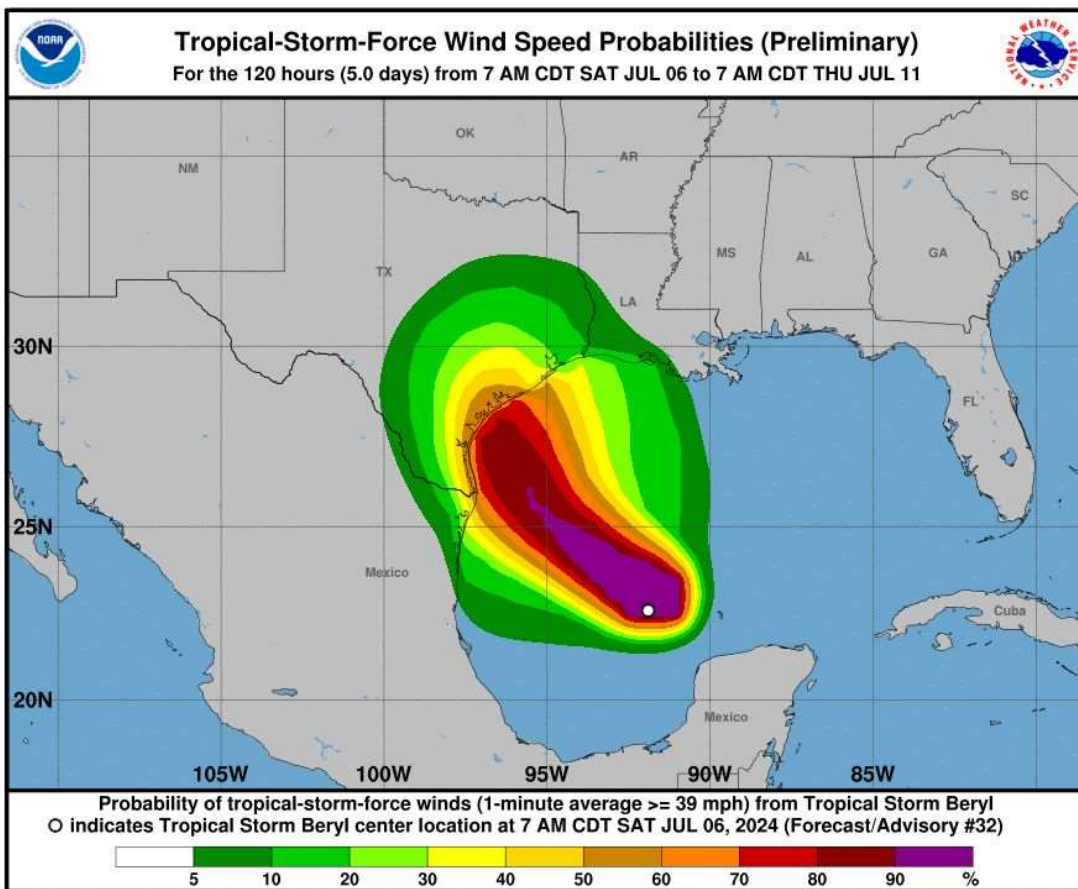




Tropical Storm Wind Speed Probabilities

July 6, 2024
11:00 AM

Tropical Storm Beryl



Chance of Tropical Storm Force Winds

- Chances range from 50-80% across the region at this time. Expect these probabilities to continue to increase as the storm gets closer to making landfall.

Probability of Tropical Storm Force Winds

- Matagorda: 69% (*Increasing*)
- Port O'Connor: 75% (*Increasing*)
- Rockport: 61% (*Increasing*)
- Corpus Christi: 51% (*Increasing*)
- McCallen: 18% (*Decreasing*)



National Oceanic and
Atmospheric Administration
U.S. Department of Commerce

National Weather Service
Corpus Christi, TX



50 Knot Wind Speed Probabilities

July 6, 2024
11:00 AM

Tropical Storm Beryl



Chance of 50 knot (58 mph) Winds

- Chances range from ~10-25% across the region at this time. Expect these probabilities to continue to increase as the storm gets closer to making landfall.

Probability of 50 knot (58 mph) Winds

- Matagorda: 31% (*Increasing*)
- Port O'Connor: 40% (*Increasing*)
- Rockport: 19% (*Increasing*)
- Corpus Christi: 12% (*Decreasing*)
- McCallen: N/A



National Oceanic and
Atmospheric Administration
U.S. Department of Commerce

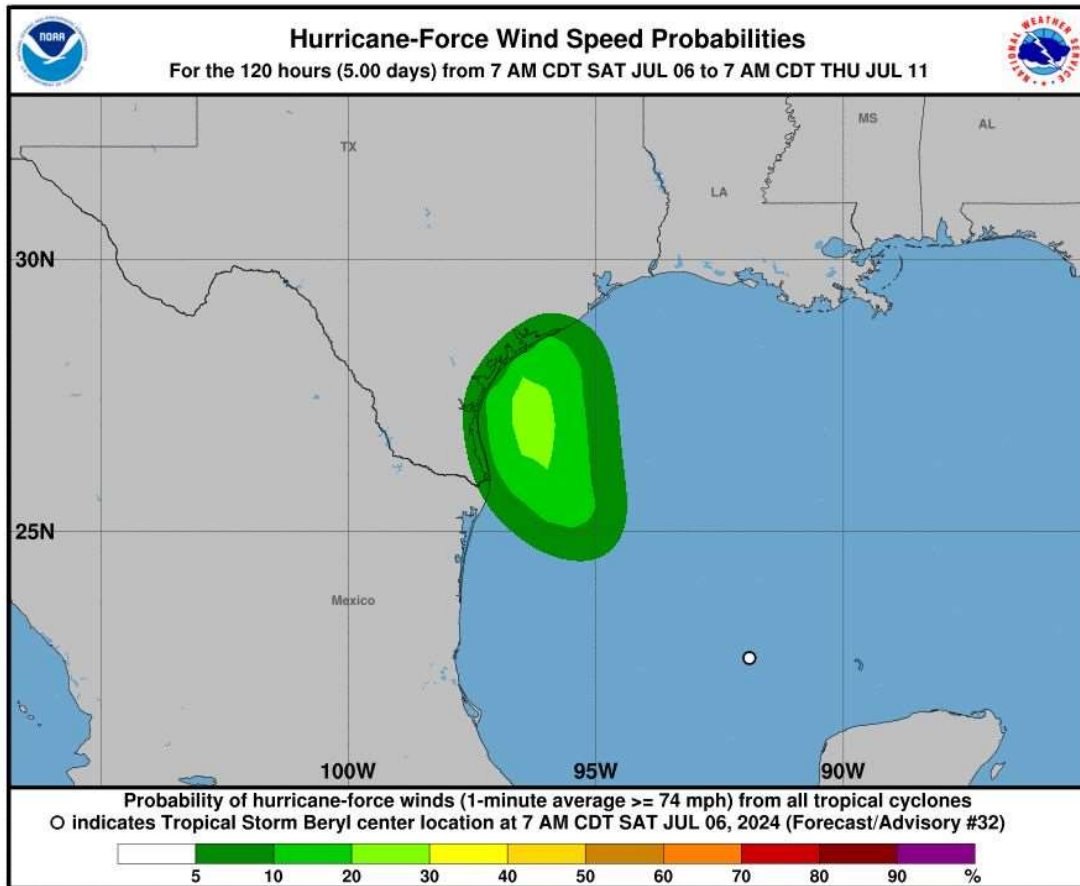
National Weather Service
Corpus Christi, TX



Hurricane Wind Speed Probabilities

July 6, 2024
11:00 AM

Tropical Storm Beryl



Chance of Hurricane-Force Winds

- Chances range from ~2-15% across the region at this time. Expect these probabilities to continue to increase as the storm gets closer to making landfall.

Probability of Hurricane-Force Winds

- Matagorda: 11% (*Increasing*)
- Port O'Connor: 15% (*Increasing*)
- Rockport: 3% (*Steady*)
- Corpus Christi: 2% (*Steady*)
- McCallen: N/A



National Oceanic and
Atmospheric Administration
U.S. Department of Commerce

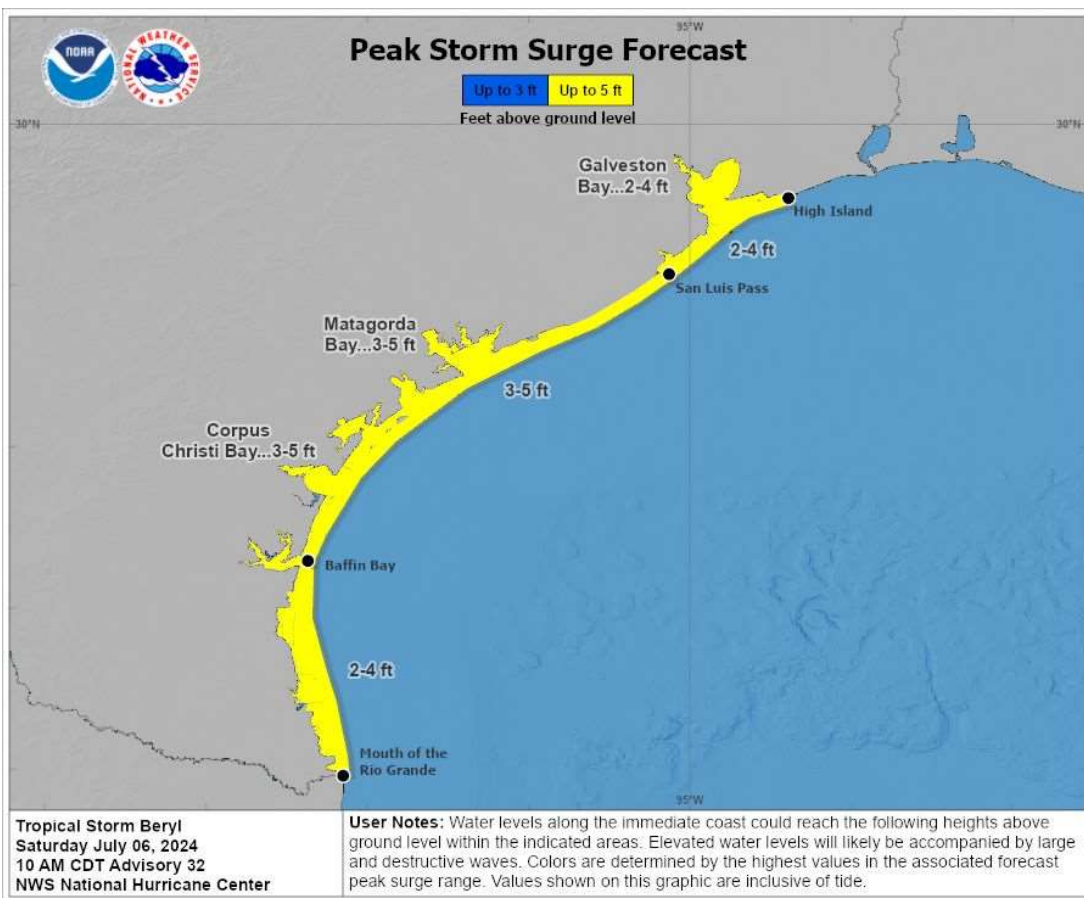
National Weather Service
Corpus Christi, TX



Peak Storm Surge Expected

July 6, 2024
11:00 AM

Tropical Storm Beryl



Storm Surge Watch is in effect.

3 to 5 feet of inundation expected.

Impacts

- Significant beach/dune erosion
- Coastal/access roads flooded
- North Beach and other low-lying coastal areas inundated



National Oceanic and
Atmospheric Administration
U.S. Department of Commerce

National Weather Service
Corpus Christi, TX

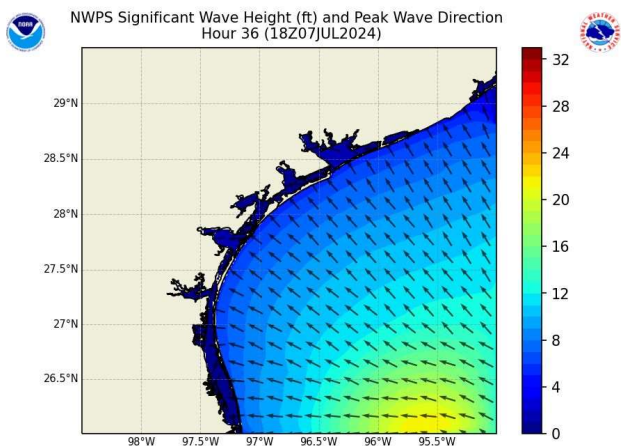


Wave Height Forecast

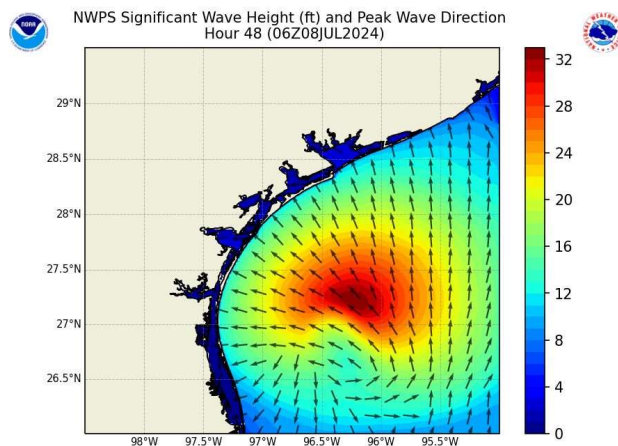
July 6, 2024
11:00 AM

Tropical Storm Beryl

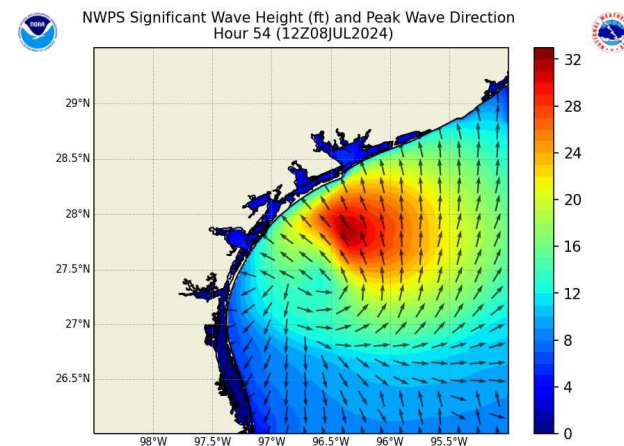
1 PM Sunday



1 AM Monday



7 AM Monday



- Wave heights are expected to peak offshore between 24 to 29 feet, occasionally higher, Sunday night and Monday morning and nearshore 16 to 21 feet, occasionally higher.
- Nearshore waves drop below 6 feet by Monday Night.





Excessive Rainfall Outlook

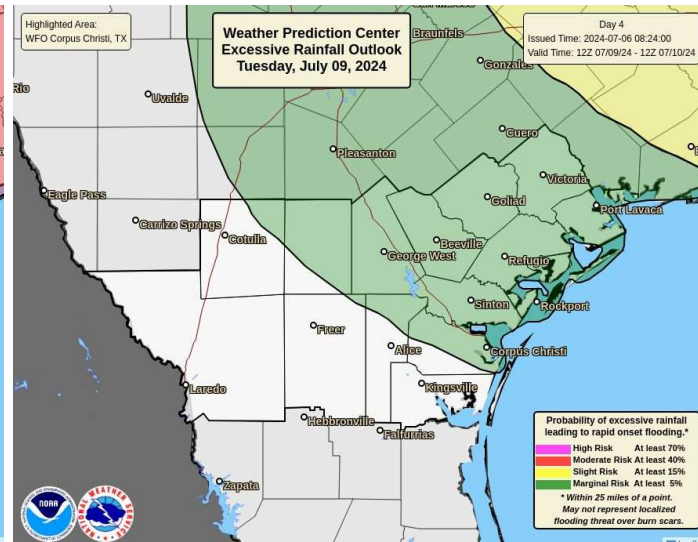
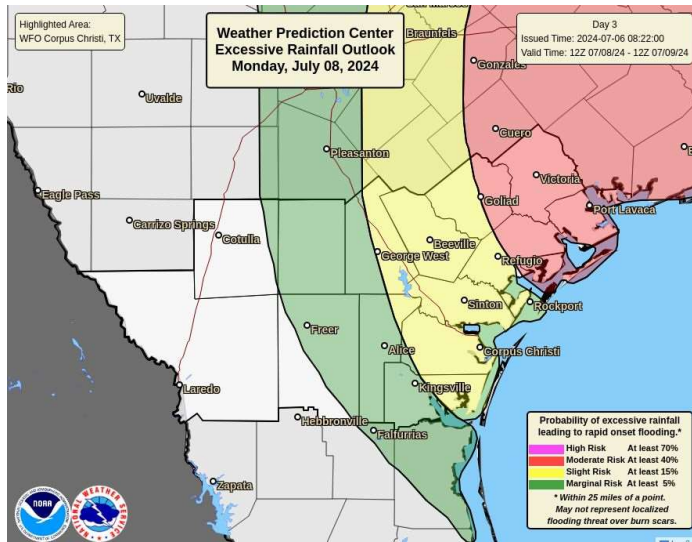
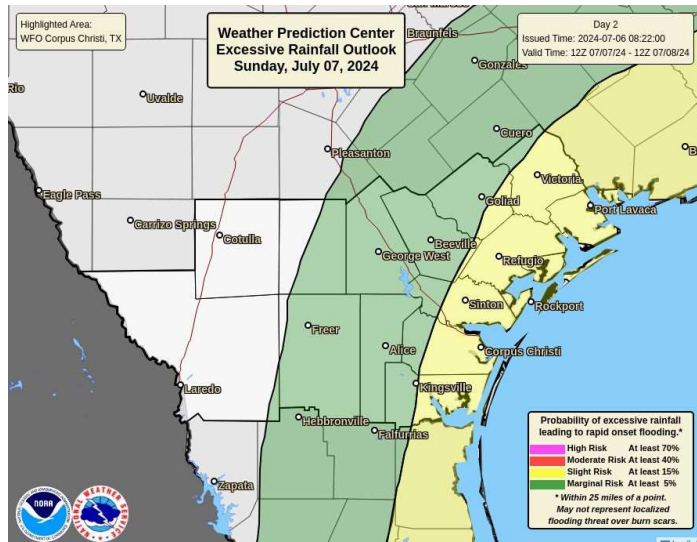
July 6, 2024
11:00 AM

Tropical Storm Beryl

Sunday Night

Monday - Monday Night

Tuesday and Tuesday Night



National Oceanic and Atmospheric Administration
U.S. Department of Commerce

National Weather Service
Corpus Christi, TX

Areas of Heavy Rain Expected

Tropical Storm Beryl

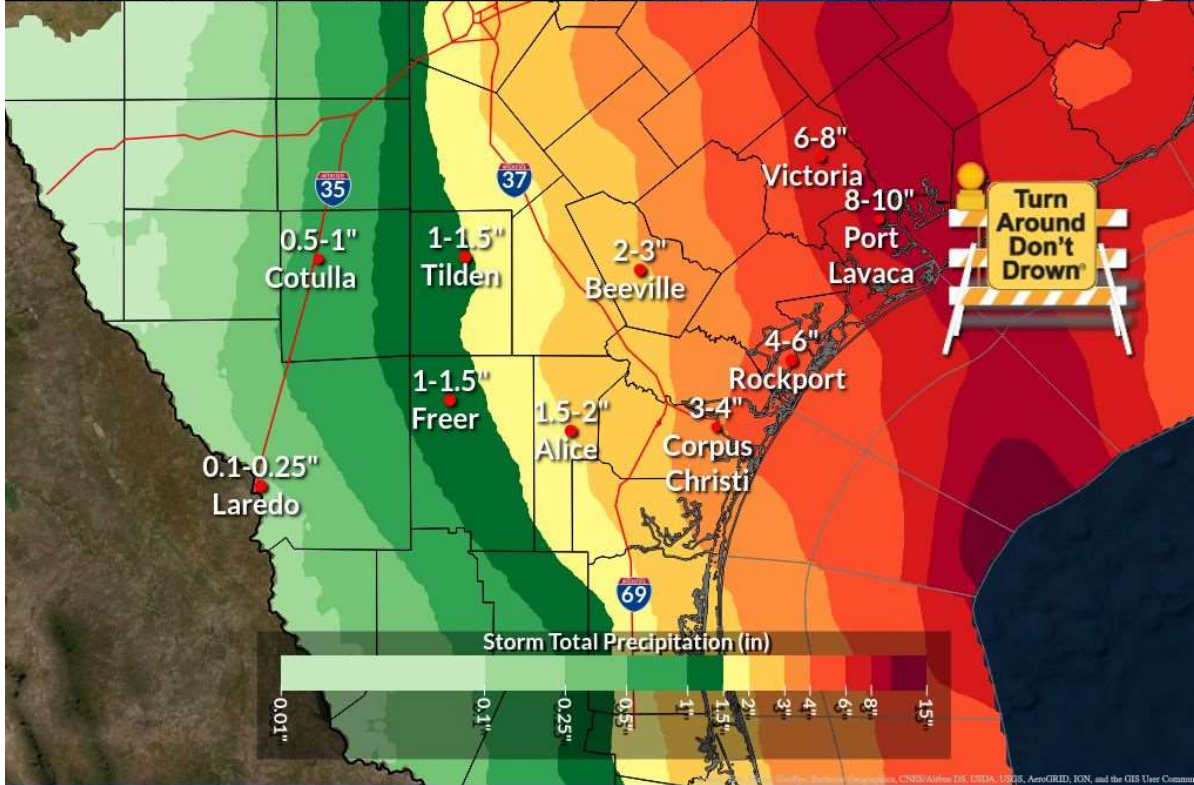


Weather Forecast Office
Corpus Christi, TX

Issued Jul 06, 2024 10:28 AM CDT

Total Rainfall through Thursday

Generally 5-10" over E Coastal Plains and Victoria Crossroads | Isolated up to 15"



- Sunday night through Monday looks to be the best time period for the heaviest rain.
- The location of the heaviest rain will be along and to the right of the center of the storm. This currently favors the area from Port Lavaca to Victoria.
 - This could shift a bit in either direction depending on the exact track of the storm.



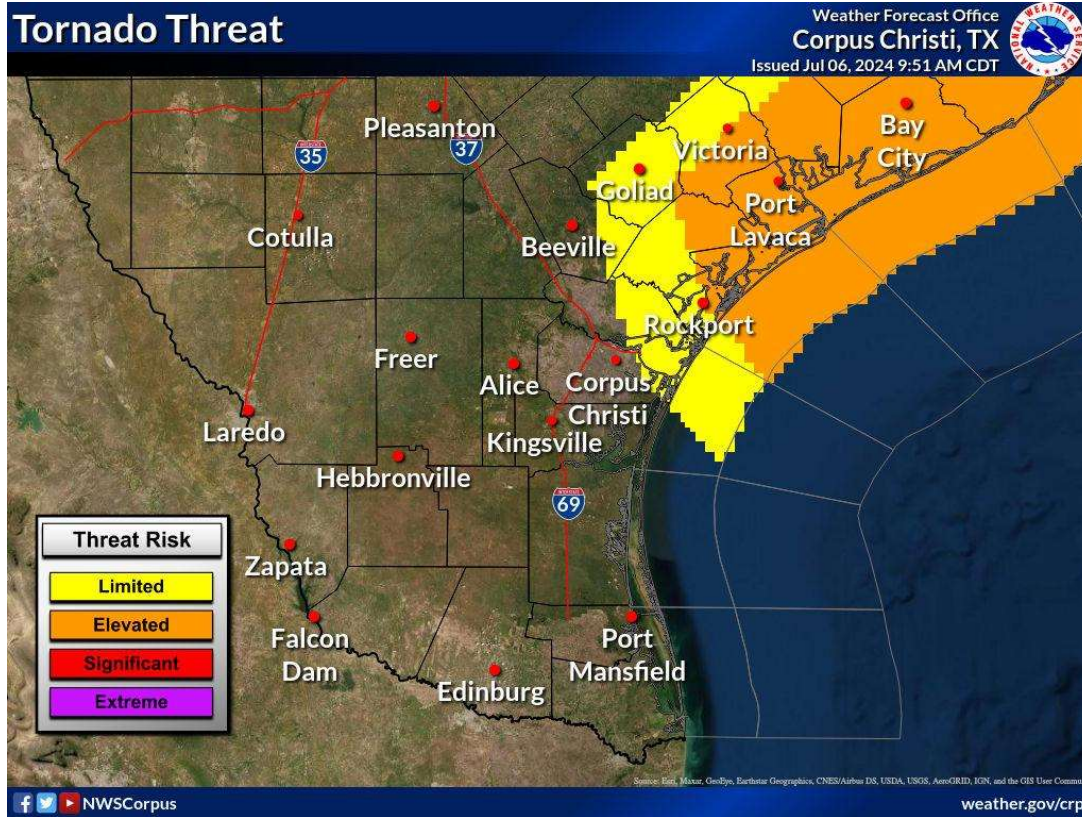


Tornado Threat - Elevated

July 6, 2024
11:00 AM

Tropical Storm Beryl

Be Safe And Prepare For These Potential Conditions



Scattered tornadoes can hinder emergency plans during tropical events.

Several places may experience...

- Tornado damage, considerable in a few places
- Power & communications failures

Examples of potential damage:

- Roofs torn off frame homes
- Mobile homes demolished
- Large trees snapped or uprooted
- Vehicles & small boats tossed and tumbled



National Oceanic and Atmospheric Administration
U.S. Department of Commerce

National Weather Service
Corpus Christi, TX



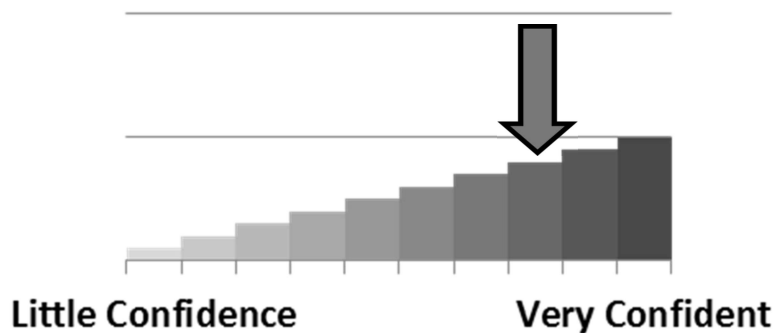
Key Take-Aways

July 6, 2024
11:00 AM

Tropical Storm Beryl

- Prepare for a Cat 2 Hurricane (currently expected to be a Cat 1 at landfall).
- Hurricane and Storm Surge Watches remain in effect. Landfall most likely Monday between Corpus Christi and Matagorda Bay.
- Earliest reasonable arrival of TS force winds is Sunday afternoon and the most likely time is Sunday night.
- Dangerous rip currents/tidal runup continue through the Holiday Weekend.
- 3 to 5 feet of storm surge possible.
- 5-10" of rain, isolated 15" may lead to flash flooding and river flooding, especially across the Victoria Crossroads and northern Coastal Bend/Plains. Risk for scattered tornadoes Sunday night through Monday.

Forecast Confidence



There is medium-high confidence in the track of Beryl, though greater uncertainty exists with the intensity at landfall.

There is high confidence in dangerous rip currents, areas of damaging winds, significant waves, and heavy rain that could lead to flash and river flooding.





Local Resources

July 6, 2024
11:00 AM

Tropical Storm Beryl

Next Briefing:

11:00 AM

Saturday, July 6th



www

Web: <https://weather.gov/corpuschristi>



Phone: (361) 289-0959



E-mail: sr-crp.awareness@noaa.gov



Facebook: @nwscorpus



Twitter: @nwscorpus



YouTube: NWSCorpus



National Oceanic and
Atmospheric Administration
U.S. Department of Commerce

National Weather Service
Corpus Christi, TX